


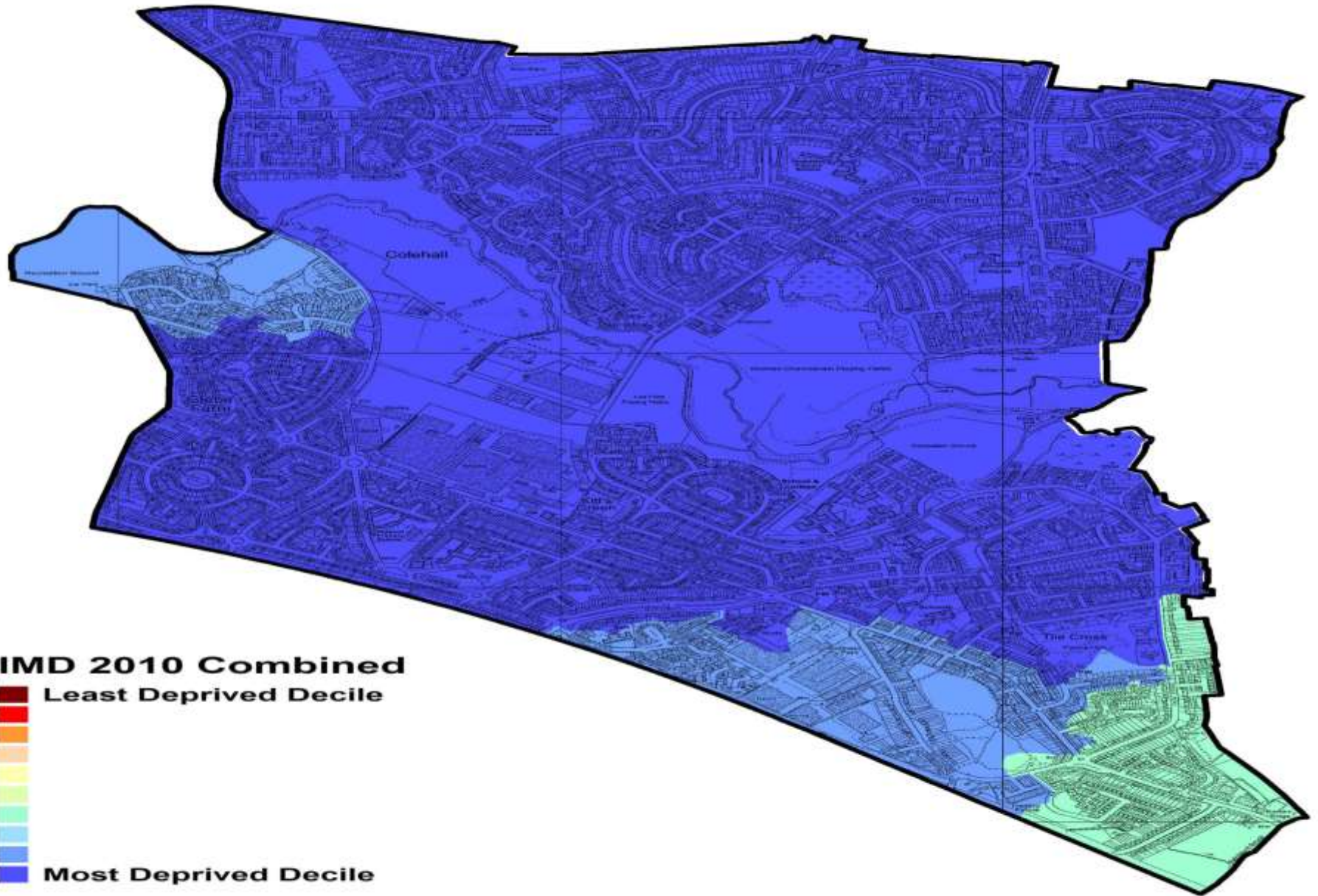
Phil Grainger
Place Manager Shard End Ward
Birmingham City Council



Place Management

- ▶ An approach to service integration that puts the “place” at the heart of what we do.
 - ▶ Aims to tackle complex and longstanding issues within neighbourhoods.
 - ▶ Working with local stakeholders to address local community priorities.
 - ▶ Coordinator for community and elected members.
 - ▶ 40 wards across the city
 - ▶ One size does not fit all
- 

Deprivation In Shard End Ward



IMD 2010 Combined

■ Least Deprived Decile




■ Most Deprived Decile



Shard End Ward

Shard End Clean and Green Group

- ▶ Bi monthly meetings
 - ▶ Agreed terms of reference
 - ▶ Chaired jointly by Police and Place Manager
 - ▶ Elected members attend
 - ▶ Representatives from all residents groups invited
 - ▶ Partners as and when required
 - ▶ Action plan
 - ▶ Performance monitoring mechanism
 - ▶ Local ownership and accountability
- 

Shard End Safe, Clean & Green Neighbourhood Plan

Tile Cross Neighbourhod Forum

Date Raised	Issue	Lead Officer / Agency	Details	Status
23/2/15	Landscaping works to Tile Cross Park	Leisure	Mike Hinton has submitted a funding application for landscaping to the park. We will be notified of the outcome of the bid in June 2016.	
	Bell Lane shops and flats above – fly tipping to rear	Place & Property Services and Councillor John Cotton	Working group established by Pat McWilliam on behalf of Cllr Cotton. Options appraisal being undertaken and Pat to provide update via Cllr Cotton. To be provided end of June.	
	Fastmoor Oval garage site	Place & Property Services and Councillor John Cotton	Clean up day completed 22/1/16. Site to be included in options appraisal for the flats	

GREEN – COMPLETED TO BE REMOVED

RED - UPDATES

Last Updated:

13/06/2016

▶ Questions?